

EQUIPMENT SCHEDULE																
Item No	Qty	Equipment Category	Manufacturer	Model Number	Equipment Remarks	Amps	KW	HP	Volts	Phase	Cycle	Direct	Plug	NEMA	Electrical Remarks	Item No
01	LOT	Shelving, Plastic	Custom	Custom - Shelving, Plastic												01
02	2	Table, Prep w/ Sink	John Boos & Co.	EP16R10-DL2B-96R												02
03	1	Table, Work 16/300, 5" Backsplash, SS Shelf	John Boos & Co.	ST6R5-3096SSK												03
04	1	EXHAUST HOOD	TBD	HOOD-15	16'-0" INCLUDING FIRE CABINET											04
		SUPPLY FAN / MAU-1														
		EXHAUST FAN														
05	1	Oven-Steamer, Combination, Gas	CONVOTHERM USA	C4ET 6.20 GS-N	W/ EQUIPMENT STAND & WATER FILTER	7.5	0.5		1.5 2.0	208 208	3 3	60 60	X X			05
06	1	Range, Restaurant, Gas	Vulcan	36S-68-N		4.0			115	1	60	X			5-15P	06
07	1	Stand, Cooking Equipment, Refrigerated Base	Turbo Air	PRCBE-36R-N		3.0	0.3	1/4	115	1	60	X			5-15P	07
08	1	Griddle, Gas	Vulcan	MSA36												08
09	1	Fryer, Deep Fat, Gas	Dean	2FPRG50T		8.0	1.0		120	1	60					09
10	2	Table, Work 16/300, Flat Top, SS Shelf	John Boos & Co.	ST6-3060SSK												10
11	1	Table, Work 16/300, Flat Top, SS Shelf	John Boos & Co.	ST6-3096SSK												11
11.1	1	Rack, Pot & Pan, Boat Shape	John Boos & Co.	PRB04												11.1
13	1	Refrigerator, Sandwich/Salad Prep	Defield	4460NP-24M		6.0	0.7	0.4	120	1	60	X			5-15P	13
14	2	Racks, Drying	Metro	PR48VX4												14
15	1	Sink, 3 comp, 18/300, B-Series	John Boos & Co.	3B20304-2024												15
15.1	1	Rack, Pot & Pan, Single Bar	John Boos & Co.	PRW14A												15.1
16	2	Faucet, Wall Mount	T & S Brass	B-0231-CC												16
17	1	Dishable, Straight, Soiled	John Boos & Co.	SDT4-S72SBK-L												17
18	1	Pre-Rinse Faucet, Deck Mount	T & S Brass	B-0113-BC												18
19	1	Warewasher, Door Type, High Temp	Hobart US Foodservice	AM16VL-BAS ELECTRIC	Single Point Conn	53.5			208	3	60	X				19
20	1	Dishable, Straight, Clean	John Boos & Co.	CDT6-S60SBK-R												20
21	1	Oven, High Speed (DOUBLE STACK)	Pratica	FORZA STI DOUBLE		30.0	5.6		208	1	60	X			6-30P	21
						30.0	5.6		208	1	60	X			6-30P	21
22	1	Table, Work 16/300, 5" Backsplash, SS Shelf	John Boos & Co.	ST6R5-3636SSK												22
24		Refrigerator, Reach-In	Metro	CS39-DC		16.0	2.0		120	1	60	X			5-20P	24
25	1	Cabinet, Holding/Proofing	Metro	CS39-DC		16.0	2.0		120	1	60	X			5-20P	25
26	1	SERVING COUNTER	SERVTECH	SERV-14	13'-8" LENGTH											26
27	1	Drop-In, Hot Wells	Defield	NB745-D		15.0	3.0		208	1	60	X				27
28	1	Sneeze Guard	Servtech	3W-CONV-47C												28
29	1	Display Lights	Hatco	HL5-42		0.1			120	1	60	X				29
30	1	Drop-In, Heated Shelf	Hatco	GRSBF-48-S		10.2	1.2		120	1	60	X			5-15P	30
31	1	Sneeze Guard	Servtech	48HS-CONV-51C												31
32	1	Warmer, Food Overhead	Hatco	GR5AL-42		5.8	0.7		120	1	60	X				32
33	1	Drop-In, Cold Pan	Defield	NB143BP		3.1		0.2	115	1	60	X			5-15P	33
34	1	Sneeze Guard	Servtech	3W-CONV-47C												34
35	1	Display Lights	Hatco	HL5-42		0.1			120	1	60	X				35
36	1	Merchandiser	Beverage-Air	VMHC-12-1-G		12.0			115	1	60	X			5-20P	36
37	1	CASHIER COUNTER	SERVTECH	CASH-4	4'-0" LENGTH											37
38	1	Cash Register	BY OWNER	BY OWNER		2.0			120	1	60	X			5-20P	38
39	1	BEVERAGE COUNTER	SERVTECH	BEV-6												39
40	1	Beverage Counter	Custom	11 ft 8 in												40
40	1	Ice Maker w/o Bin	Ice-O-Matic	CM0530A		17.8			115	1	60	X			30A MOCF	40
40.1	1	Bin, Ice	Ice-O-Matic	B55PS												40.1
42		Sink, Drop-In	John Boos & Co.	EP6R10-DL2B-96R												42
43		Pre-Rinse Faucet	T & S Brass	B-0113-BC												43
44		Oven, Microwave	Transonic	NR143BP												44

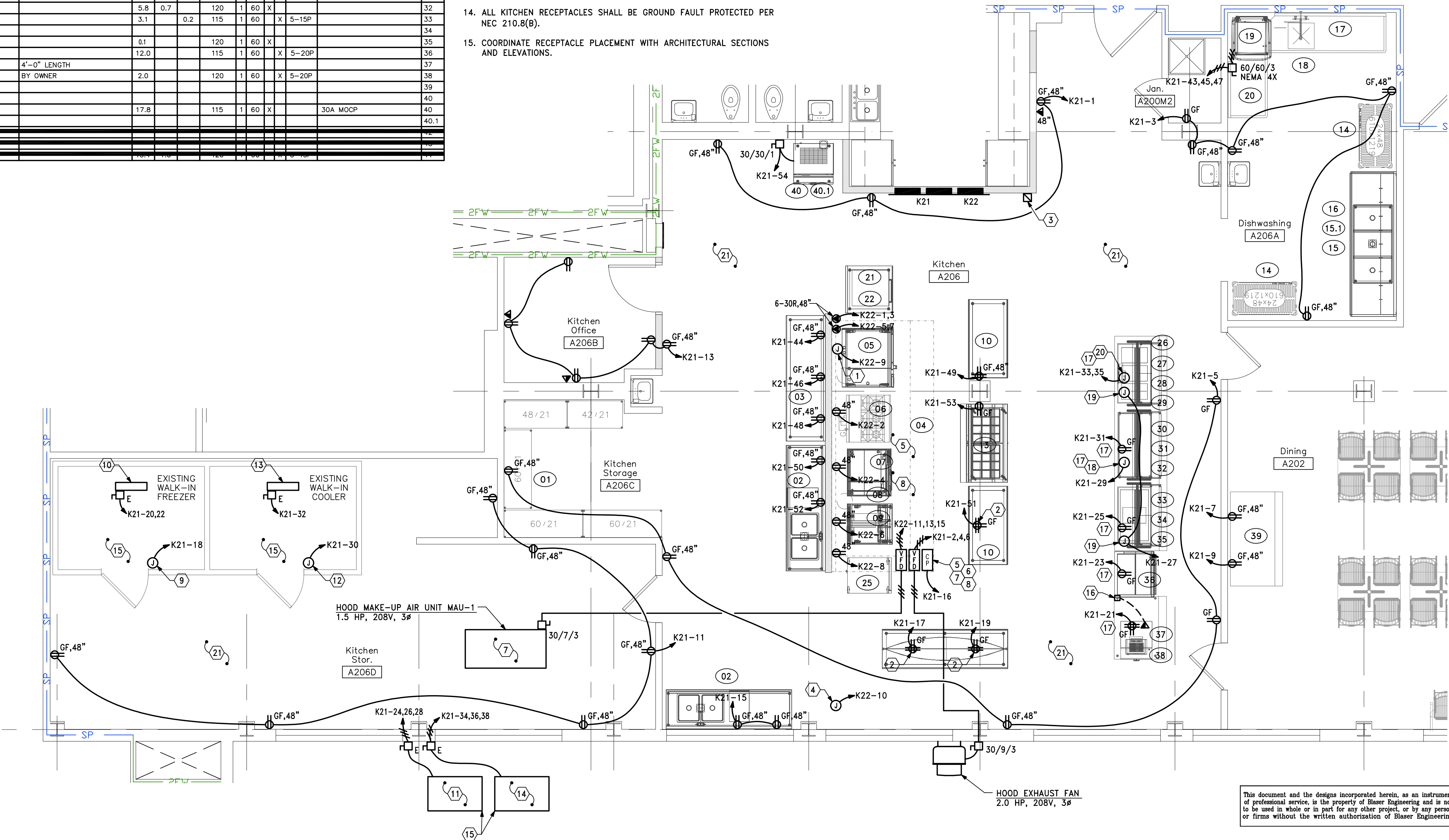
GENERAL NOTES

- COORDINATE CEILING MOUNTED DEVICES WITH ARCHITECTURAL REFLECTED CEILING PLAN.
- ALL DEVICES SHALL BE TAMPER RESISTANT PER 406.12.
- ALL FIRE ALARM SYSTEM DEVICES SHALL BE FULLY COMPATIBLE WITH THE EXISTING FIRE ALARM SYSTEM.
- ALL LOW VOLTAGE WIRING SHALL BE SUPPORTED BY J-HOOKS, CABLE TRAY OR OTHER MEANS SECURELY FASTENED TO THE BUILDING STRUCTURE.
- ALL ABANDONED IN PLACE PHONE, DATA, AND OTHER LOW VOLTAGE WIRING IN THIS SPACE SHALL BE REMOVED PER NEC 725.25 AND NEC 800.25.
- PROVIDE CONDUIT SLEEVES ABOVE ALL DOORS TO ROOMS SHOWN WITH PHONE, DATA, TELEVISION, OR OTHER LOW VOLTAGE COMMUNICATIONS SYSTEMS. PROVIDE AS FOLLOWS:
  - 2 - 2" CONDUIT SLEEVES INTO THE KITCHEN.
  - 2 - 1" CONDUIT SLEEVES INTO OFFICES, BREAK ROOMS, OR OTHER SPACES.
- ALL EMPTY CONDUITS SHALL BE PROVIDED WITH A PULL STRING.
- PER NEC 210.8, ALL GROUND FAULT RECEPTACLES ARE TO BE IN A READILY ACCESSIBLE LOCATION. IF NOT, PROVIDE A GROUND FAULT CIRCUIT BREAKER IN THE PANEL, OR A DEAD FRONT GROUND FAULT DEVICE IN AN ACCESSIBLE LOCATION SERVING THE INACCESSIBLE DEVICE.
- COORDINATE ACTUAL MOUNTING LOCATIONS OF ALL EQUIPMENT WITH CONTRACTOR PROVIDING THE EQUIPMENT.
- PROVIDE FINAL CONNECTIONS TO ALL EQUIPMENT SUPPLIED BY OTHERS.
- PROVIDE NEMA 3R RATED SAFETY SWITCHES WHERE LOCATED OUTDOORS.
- PROVIDE NEMA 4X RATED SAFETY SWITCHES WHERE LOCATED IN KITCHENS AND DISHWASHING AREAS.
- PROVIDE MATCHING PLUG, PIGTAIL, AND CONNECTIONS TO EQUIPMENT FOR ALL SPECIAL PURPOSE RECEPTACLES.
- ALL KITCHEN RECEPTACLES SHALL BE GROUND FAULT PROTECTED PER NEC 210.8(B).
- COORDINATE RECEPTACLE PLACEMENT WITH ARCHITECTURAL SECTIONS AND ELEVATIONS.

CODED NOTES

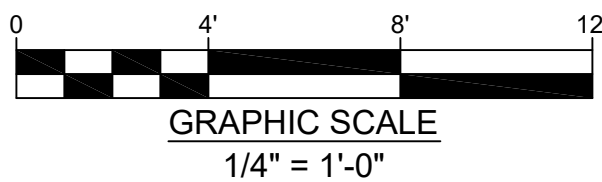
- PROVIDE POWER CONNECTION TO OVEN-STEAMER.
- PROVIDE CEILING HUNG DROP CORD WITH GROUND FAULT RECEPTACLE SUSPENDED ABOVE THE TABLE. COORDINATE HEIGHT ABOVE TABLE WITH THE OWNER. SEE CORD DROP DETAIL FOR ADDITIONAL INFORMATION.
- KITCHEN HOOD MANUAL PULL STATION/EMERGENCY SHUT-OFF. COORDINATE ACTUAL MOUNTING LOCATION WITH THE EQUIPMENT SUPPLIER.
- PROVIDE POWER CONNECTION TO GAS SOLENOID VALVE SERVING THE COOKING EQUIPMENT UNDER THE KITCHEN HOOD. SOLENOID VALVE SHALL SHUNT TRIP OFF WHEN HOOD SUPPRESSION ACTIVATES. COORDINATE ACTUAL MOUNTING LOCATION IN THE FIELD.
- CONTRACTOR SHALL PROVIDE POWER CONNECTION FROM THE CONTROL PANEL TO THE HOOD LIGHTING.
- HOOD SHALL BE MONITORED BY THE BUILDING FIRE ALARM SYSTEM FOR ALARM AND TROUBLE CONDITIONS.
- PROVIDE CONTROL SIGNAL FROM HOOD CONTROL PANEL TO THE MAKE-UP AIR UNIT. COORDINATE REQUIREMENTS WITH EQUIPMENT SUPPLIER.
- PROVIDE CONTROL WIRING FROM HOOD TEMPERATURE SENSORS TO THE HOOD CONTROL PANEL.
- PROVIDE POWER CONNECTION TO EXISTING FREEZER LIGHT AND DOOR HEATER.
- PROVIDE POWER CONNECTION TO EXISTING FREEZER EVAPORATOR COIL (208V, 1Ø).
- PROVIDE POWER CONNECTION TO EXISTING FREEZER CONDENSING UNIT ON ROOF (208V, 3Ø).
- PROVIDE POWER CONNECTION TO EXISTING COOLER LIGHT AND DOOR HEATER.

- PROVIDE POWER CONNECT TO EXISTING COOLER EVAPORATOR COIL (120V, 1Ø).
- PROVIDE POWER CONNECTION TO EXISTING COOLER CONDENSING UNIT ON ROOF (208V, 3Ø).
- FIELD VERIFY WHICH WALK-IN COOLER IS THE FREEZER OR COOLER. ADJUST CIRCUITS AS NECESSARY TO REFEED EQUIPMENT FROM ELECTRICAL PANELS.
- PROVIDE POWER POLE WITH POWER AND LOW VOLTAGE CHANNELS FOR POWER AND DATA CONNECTIONS TO THE CASH REGISTER AND SERVING LINE EQUIPMENT. SIZE POWER POLE TO ACCOMMODATE ALL CIRCUITS AS REQUIRED. PROVIDE SWITCH ON THE POWER POLE FOR CONTROLLING THE SERVING COUNTER LIGHTING.
- ROUTE BRANCH CIRCUIT THROUGH LIQUID TIGHT FLEXIBLE CONDUIT ALONG BOTTOM OF EQUIPMENT BACK TO THE POWER POLE AND ONTO THE ELECTRICAL PANEL.
- PROVIDE POWER CONNECTION TO OVERHEAD FOOD WARMER #32.
- PROVIDE POWER CONNECTION TO SERVING COUNTER LIGHTING #29 & #32. PROVIDE SWITCH TO CONTROL THE LIGHTING ON THE POWER POLE.
- PROVIDE POWER CONNECTION TO THE HOT FOOD WELLS #27 IN THE SERVING COUNTER.
- SEE SECOND FLOOR PLANS FOR FIRE ALARM AND LIGHTING REQUIREMENTS IN THIS AREA.



Enlarged Kitchen Power Plan  
Second Floor

Scale: 1/4"=1'-0"



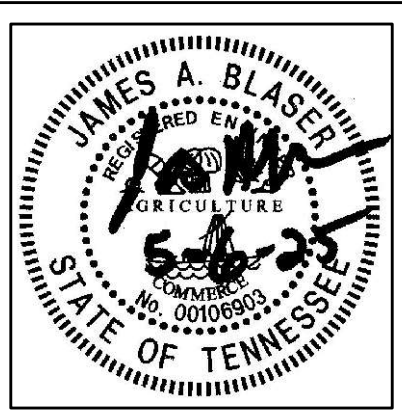
This document and the designs incorporated herein, as an instrument of professional service, is the property of Blaser Engineering and is not to be used in whole or in part for any other project, or by any person, or firms without the written authorization of Blaser Engineering.

Blaser Engineering

398 Moore Street  
Bristol, VA 24201  
Phone: (423) 349-8380

BLASER ENG JOB# 24-142

Revisions	Description	Date	No.



Renovations for  
**Greene County Government**  
Greenville, Tennessee



110 S. Main Street  
Greenville, TN. 37743  
Phone: (423) 525-5093  
Fax: (423) 525-5095  
Cell: (423) 329-2876

Drawn: J. Blaser  
Checked: J. Blaser  
Job No: 21-160  
Scale: as noted  
Date: 05-06-2025  
File Name: 24142 electrical  
Drawing Title:  
Enlarged Kitchen  
Power Plan

Sheet No.  
**E2.1**